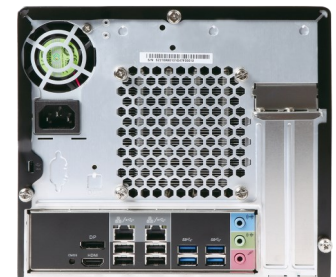


SZ270R8

xpc CUBE

FORM FACTOR	Shuttle R8 chassis	
PROCESSOR	Supports Intel Kabylake/Skylake, Core i3/i5/i7, 95W LGA 1151 CPU	
MEMORY	(4) DDR4 2133/2400 MHz, Supports dual channel up to 64GB (16GB x 4)	
VIDEO GRAPHICS	Integrated in CPU	
VIDEO OUTPUT	HDMI + DisplayPort, Supports three independent displays	
AUDIO	Realtek ALC662, 5.1 Channel HD audio	
ETHERNET	Intel Chip i211 x 2 10/100/1000 Mb/s	Supports Wake-ON-LAN function
STORAGE INTERFACE	SATA 6 GB/s	
ONBOARD CONNECTORS	(2) 4 pin fan connector (4) SATA 6.0 connectors (1) ATX main power (2x10) (1) ATX 12V power (2x2) (1) RS232 header	(1) Front USB 3.0 header (1) Front audio header (1) 2x5 pin USB header
FRONT PANEL	(1) Power Button (1) Power LED (1) HDD LED	(2) USB 3.0 (1) External microphone jack 1/8" (1) External headphone jack 1/8"
BACK PANEL	(1) HDMI (2) DisplayPort (4) USB 2.0 (4) USB 3.0 (3) Antenna holes (1) Kensington Lock	(1) Line-in jack 1/8" (1) Line out jack 1/8" (1) Audio MIC in (1) CMOS Clear Button (2) LAN ports
DRIVE BAYS	(4) 3.5" HDD bay Supports up to 8 x 2.5" HDD using 4 x PHD3 HDD rack when the system has an extra SATA or RAID card	
DIMENSIONS	13(L) x 8.5(W) x 7.79(H) inches	
POWER	Input: 100 - 240V AC Supports 80 PLUS silver	80 Plus 500W power supply
ACCESSORIES	Quick Guide CPU Thermal Grease SATA Cable x 4 (for HDD)	Driver DVD Power Cord Screw Package
EXPANSION SLOT	(1) PCI-E X16 slot (1) PCI-E X4 slot	(1) M.2 MAX to 2230 type A, E key socket (2) M.2 MAX to 2280 type M, key socket
OS SUPPORT	Windows 7 & Embedded series OS* Windows 10 & Embedded series OS	Linux



*Only supported by Skylake processors

For more information on all products, please contact us at sales@us.shuttle.com or 626.820.9000

© 2017 Shuttle Computer Group, Inc. All rights reserved. Specifications are subject to change without notice.
Not responsible for any photographic or typographic errors. Photos shown may vary from actual look.